

MODEL: TVF-1600
TUBULAR FURNACE WITH
HIGH VACUUM AND CVD SET UP



THERELEK FURNACES
PVT. LTD.

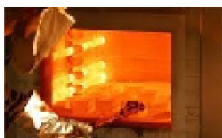


Specifications:-



- Tubular type furnace with mild steel outer body and powder coating.
- Suitable stand also be provided with furnace.
- Super kanthal (molybdenum disilicide) heating elements which can maintain desired operating temperature.
- Heating recrystallized alumina tube with 70mm(ID)x80mm(OD) x1000mm(length) which can sustain 1800deg.c temperature.
- Stainless steel (ss-310) end flanges with water cooling arrangement also provided. Viton O-rings,vacuum gauges also be provided.
- Microprocessor based digital programmable controller cum indicator, with at least 2 programs, 16 segments.
- Vacuum : 1×10^{-5} mbar , pumping speed 125liters/sec or better. Digital indication of vacuum level. Suitable mounting mild steel frame with wheels also provided with vacuum system.

Areas of application:-



Heat treatment industries



Automobile industries



Basic research/research industries

Address:- A/131, Road no. 23, Wagle Industrial Estate,
Thane-400 604, Maharashtra, India

Tel:- 91 22 25823441/25823442/25812417

Fax:- 91 22 25830540

Email:- contact@therelek.co.in

Website:- www.therelek.co.in, [www.indiamart.com/ therelek-furnaces](http://www.indiamart.com/therelek-furnaces)